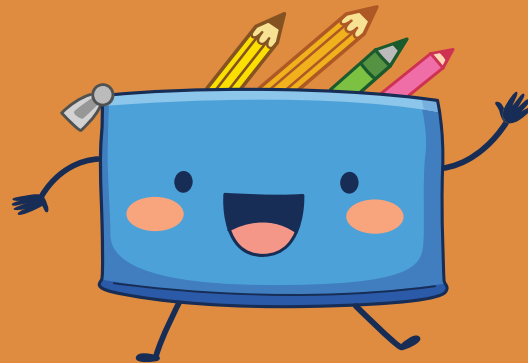
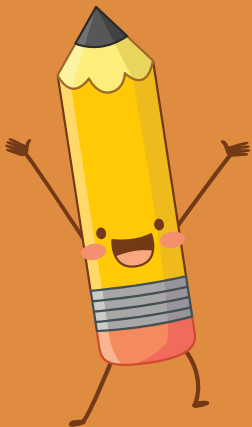




ELOM IN PRACTICE WEBINAR

LETCEE 4&5 PLAYGROUPS AND CENTRES

18 June 2025



INTRODUCTION

LETCEE is an Early Childhood Development (ECD) non-profit organisation working to provide playful early learning experiences to South African kids who would not otherwise have access to these services. LETCEE uses an integrated/holistic approach to ECD.

How? And where

NQF Level 4 ECD

Playgroups

ECD Centres



Why ELOM STUDY AND GAPS IN LETCEE M&E SYSTEM?

ELOM 4& 5, for school
readiness tracking
Comparison study of
playgroups and centres

LETCEE Quality
assessments

Practitioner self and
Grow assessment.

Quartely reporting
tools on child progress



Why have you embedded the tools/data into your standard M&E practices - motivation?



Enhanced Evidence-Based Decision Making



Tracking Progress and Impact



Alignment with Program Objectives



Identifying Trends and Patterns

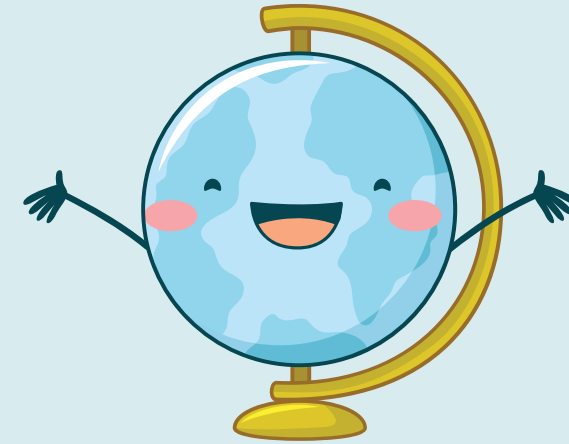
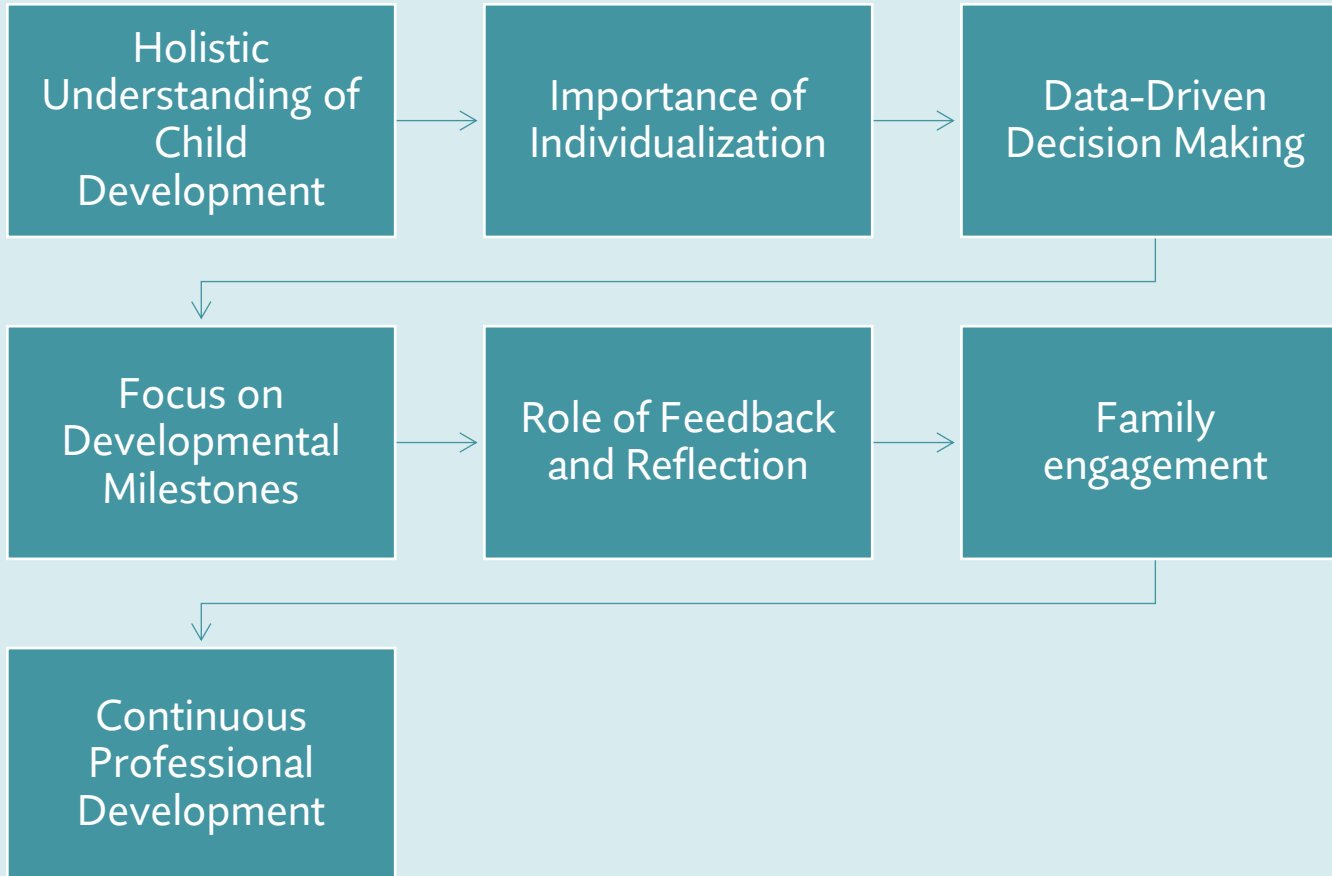


Strengthening Accountability

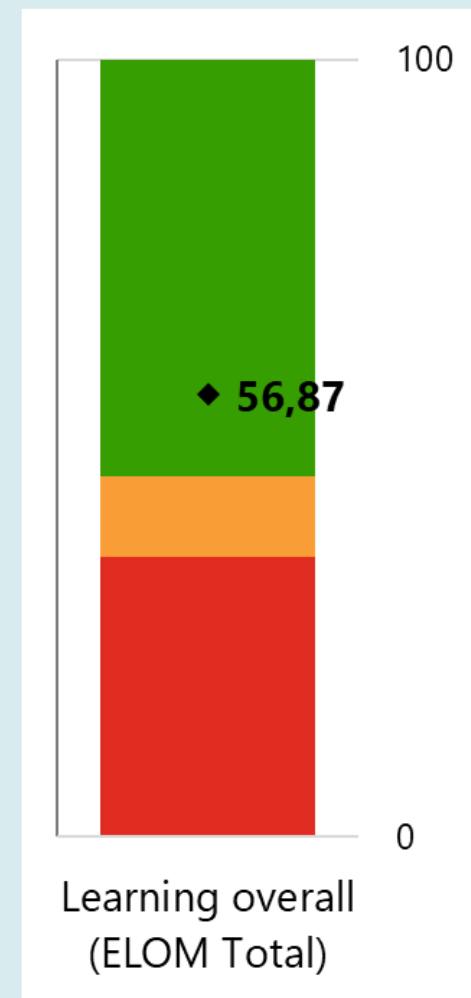
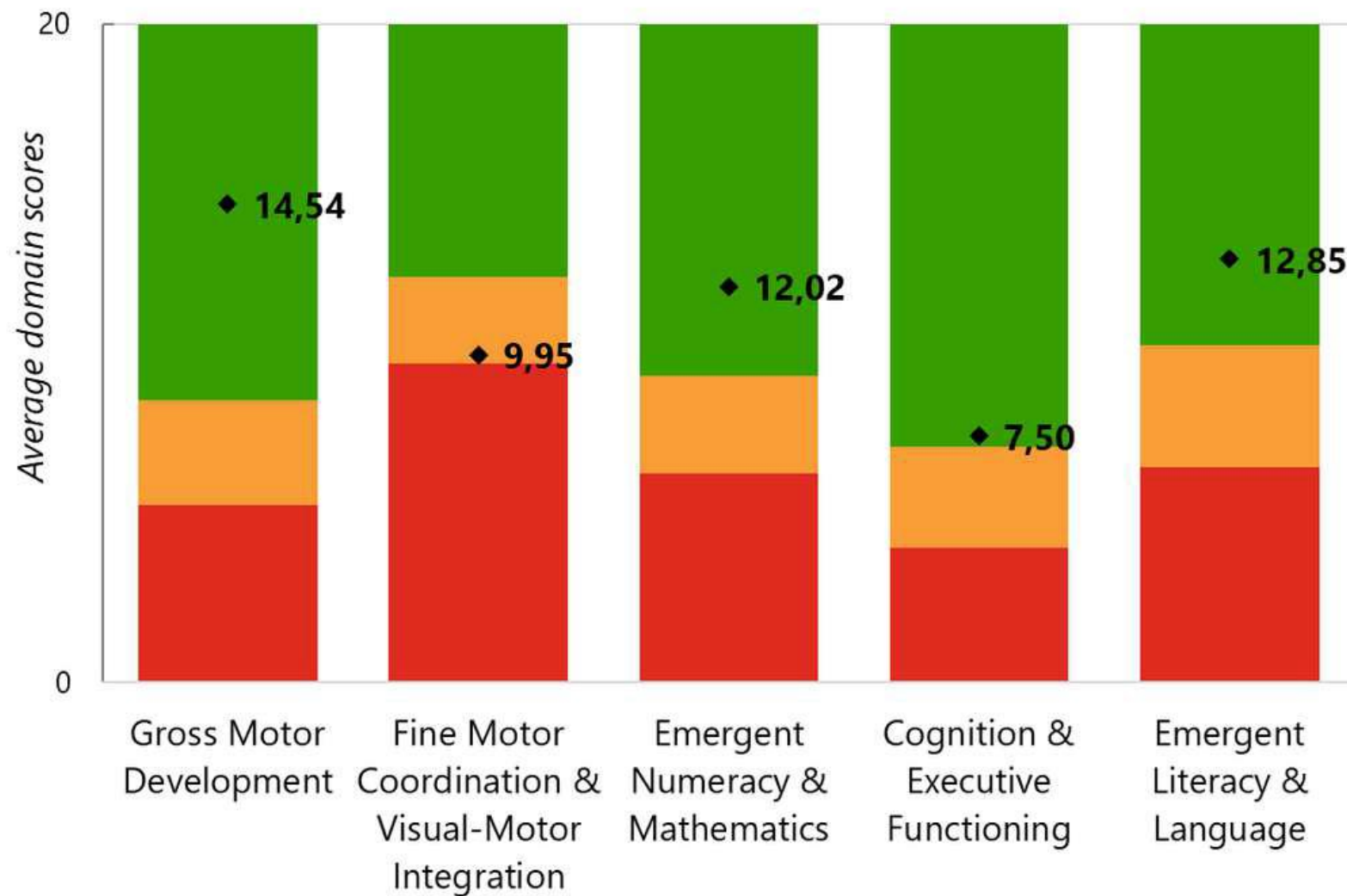


Informed Program Improvement

LESSONS AND COMMUNICATION

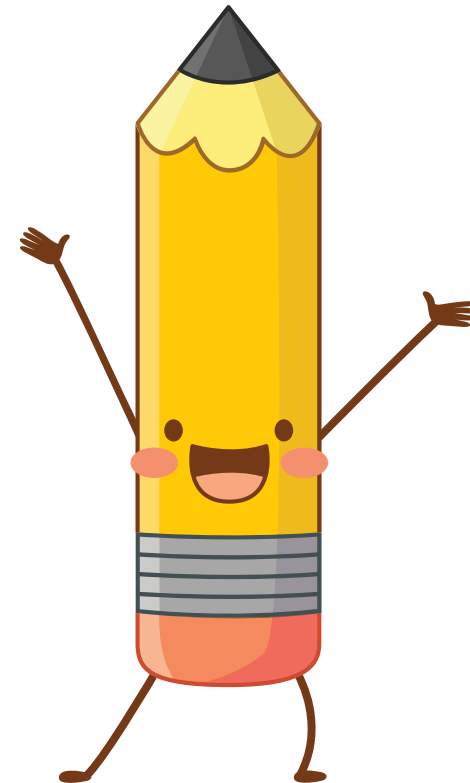


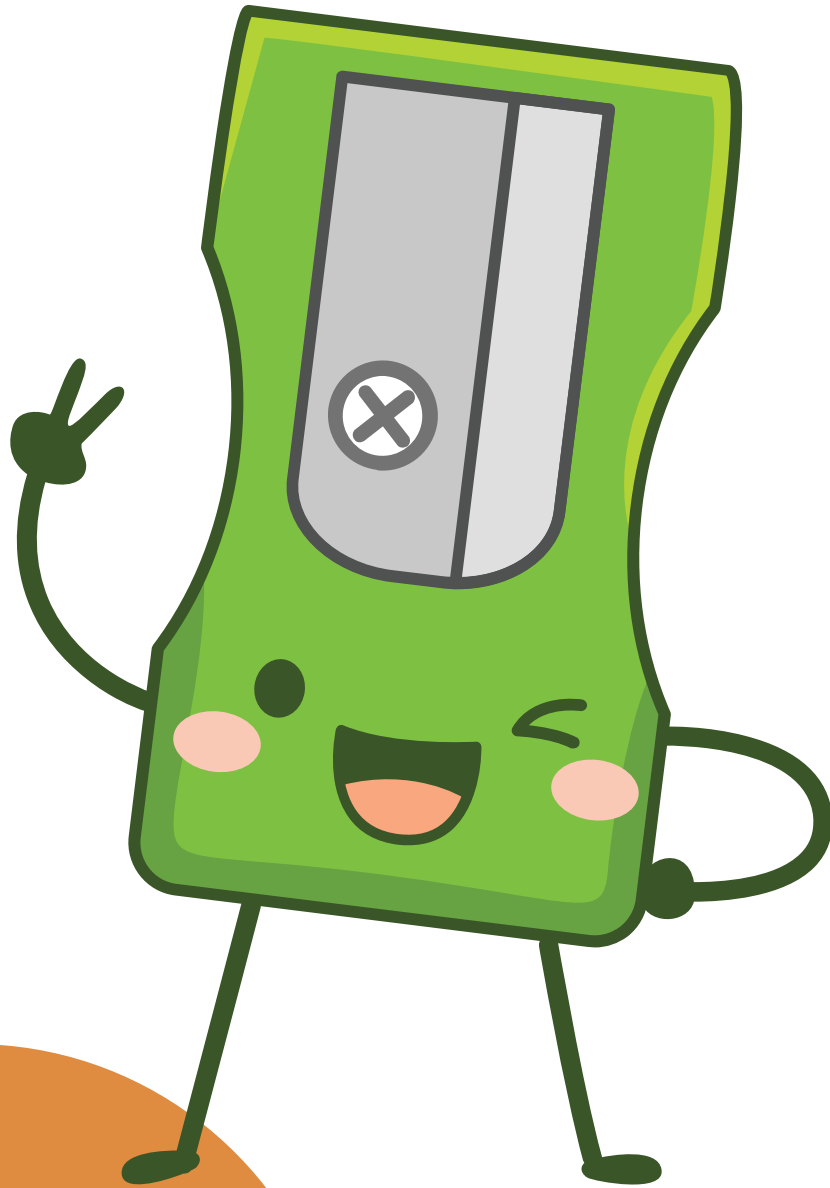
SNEAK PEAK INTO RESULTS



USING RESULTS AND DESIRED CHANGE

- Setting developmental goals
- Design Tailored Activities (where our children did not perform well).
- Differentiate Instruction
- Professional development
- **Change:-**
 - Move from a one-size-fits-all approach to personalized learning plans that address the specific strengths and areas for improvement identified through the assessments.





Enablers / challenges to this process?

- **ENABLERS**

- Early preparation
- Data-Driven Insights
- Standardization
- Capacity Building

- **CHALLENGES**

- Sample (size, characteristics, time)
- Resource Limitation (Using internal assessor and potential bias)
- Time Constraints (Not enough time)



What would your main message to users be?

Use aggregate ELOM results to evaluate the overall effectiveness of the ECD program.

- Identify trends and areas for program improvement and make necessary adjustments based on findings.

Look for strengths and areas for improvement in each child's developmental profile.

By systematically applying ELOM assessment results, you can enhance the effectiveness of your ECD program, ensuring that it meets the individual developmental needs of each child while promoting positive outcomes across all dimensions of their early learning journey.



WILD CARD

Parent and Caregiver Input

Home Observations: Including input from parents or caregivers about children's skills and behaviors at home can provide a more holistic view of a child's development.

Family Interviews: Conducting structured interviews with families can yield valuable qualitative data to complement standardized measures.